

Winter School – Tropical Diseases



Botucatu Medical School



AIMS

To introduce Tropical Diseases to foreign students

PROGRAM

Theoretical lectures

Health Surveillance (Epidemiological surveillance)

Infection control in the Tropics

Malaria

Leishmaniasis

Hansen's disease

Paracoccidioidomycosis

Dengue/Yellow fever/Chikungunya/Zika

HIV

Ophidic accidents

Visits

Wards/ambulatories (including patient's discussions)

Hospital Lauro Souza Lima Bauru (Hansen's disease hospital)

Domingos Alves Meira (Day-hospital for HIV)

CEVAP (Center for the Study of Venoms and Venomous Animals)

Microbiology labs

Healthcare centers in Botucatu and in the region (rural area)

Home visit (IUSC)

* Bring your white coat

SOCIAL PROGRAM

Visit to the coffee museum, Lageado Farm (former coffee farm) and

CEVAP (Center for the Studies of Venoms and Venomous Animals)

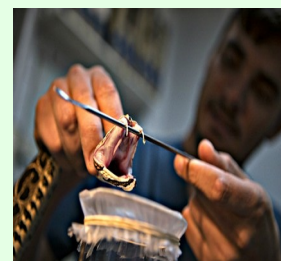
Samba/Forró night (consumption not included)

Night at "Espetinhos" (consumption not included)

International Party, organized by the International Office and the Medical Students' International Department

DATES

July 27th to August 12th, 2016



LANGUAGE OF INTRODUCTION

English



FEES

Registration fee: **€50.00** (Free for cooperated universities)

Brazil Bank Fee: **€ 20.00**

Housing fee:

Single room: **€ 630,00** per person for the whole period
(wi-fi, breakfast included)

Double room: **€ 570,00** per person for the whole period
– (wi-fi, breakfast included)

Three-bed room: **€ 510,00** per person for the whole period
– (wi-fi, breakfast included)

Four-bed room: **€ 450,00** per person for the whole period
– (wi-fi, breakfast included)

* Included: Breakfast / Lunch / local transportation / transfer airport-Botucatu-airport / local visits: provided by Botucatu Medical School

ONLINE APPLICATION

http://www.staepe.fmb.unesp.br/eri/eri_passport.asp

SUPPORTING DOCUMENTS

- Passport
- Enrollment Statement
- Health Insurance

CONTACT US

eri@fmb.unesp.br

